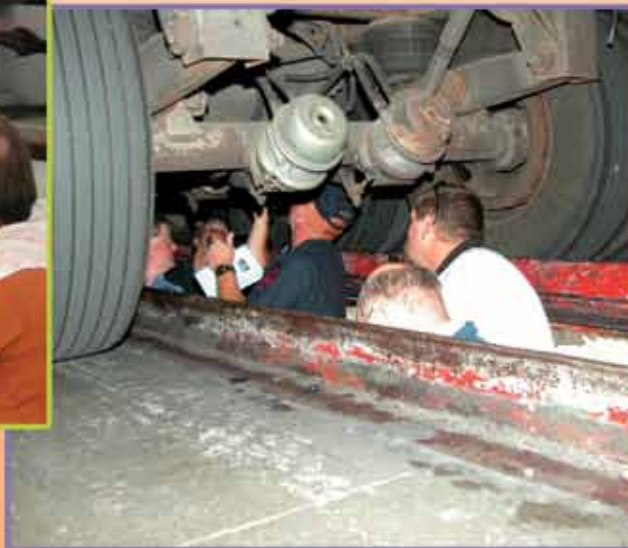


2009-2010

Nebraska Trucking Association/NATMI Educational Catalog



**Special
summer and winter
Certification Series!**



Sign up now for seminars focusing on safety, DOT mandatory training, cost control, fleet maintenance management and accident prevention.

Nebraska Trucking Association Summer Educational Series

SEPTEMBER

Certified Cargo Security Professional

How to Become Certified

Certified Cargo Security Professional (CCSP)

Experience required:

- ❖ Baccalaureate degree from any accredited Institution of Higher Learning; Master's or related degree (PhD, MD, or JD), or High School Diploma or GED equivalent with one (1) year experience in the cargo/transportation industry; or
- ❖ Five (5) years supervisory or management experience in the cargo/transportation industry

Course recommendations:

- ❖ CCSP Exam Prep Course

Exam: CDM/E exam will be given the next day following the Prep Course

Fees

Inclusive tuition for Certification includes:

- ❖ Course fees
- ❖ NATMI membership fee
- ❖ Certification kit
- ❖ Certification application fee

CCSP: \$300 (includes prep course + certification exam)

Sept. 17th-18th - CCSP Exam Preparation Course (2 days)

Developed by the University of Central Florida Center for Homeland Security and taught by Transportation Security Administration certified instructors, this course provides managers responsible for fleet security comprehensive training on security management, including preventing terrorist threats, and effectively managing facility, driver and cargo security programs. Sample programs, policies and procedures provided. The course covers:

- ❖ Global Terrorism and Threats to Motor Carriers
- ❖ Site Security Assessment Procedures
- ❖ Site Access & Exit Control
- ❖ Cargo Security
- ❖ Recommended and Required Hiring Procedures
- ❖ Security Awareness for Drivers
- ❖ ID of Criminal Aliens, 4th Amendment & Civil Rights

Registration Deadline: Sept. 1

Class size is limited to the first 20 registrants.

Nebraska Trucking Association Summer Educational Series

SEPTEMBER

Certified Safety Supervisor/Certified Director of Safety

How to Become Certified

Certified Director of Safety (CDS)

Job experience required:

- ❖ Five years experience in the fleet safety field
- ❖ Four years experience in the fleet safety field (with a 4 yr. degree)

Course requirements:

- ❖ Motor Fleet Safety Basics*
- ❖ Managing Motor Fleet Safety Programs

Exam: CDS exam will be given following the "Managing Motor Fleet" course

On your own following completion of the courses:

- ❖ Submit certification application and exhibit binder within 60 days

Certified Safety Supervisor (CSS)

Job experience required:

- ❖ Two years experience in the fleet safety field

Course requirements:

- ❖ Motor Fleet Safety Basics*
- ❖ Managing Motor Fleet Safety Programs

Exam: CSS exam will be given following the "Motor Fleet Safety Basics" course

On your own following completion of the courses:

- ❖ Submit certification application and exhibit binder within 60 days

Fees

Inclusive tuition for Certification includes:

- ❖ Course fees
- ❖ NATMI membership fee
- ❖ Certification kit
- ❖ Certification application fee

CSS/CDS Test Out Option: \$1,195 (includes test out and certification exam)

CSS/CDS Full Program: \$1,295 (includes both courses and certification exam)

Sept. 21st-22nd - Motor Fleet Safety Basics (2 days)

This "fleet safety 101" program is designed to provide training on the nuts and bolts of safety-related policies and procedures. The course is designed for relatively new safety supervisors. *Certification applicants who feel they have mastered the technical content of this course have the option to test out of it. Register for the Safety Basics Testing Option the same way you would register for the classroom training.

Sept. 23rd-24th - Managing Motor Fleet Safety Programs (2 days)

Transportation safety directors and prospective safety directors will gain the vision and skills necessary to manage an effective safety program and consistently improve the safety of company operations using quality management approaches.

Sept. 25th- CSS/CDS Exam

Registration Deadline: Sept. 1

Class size is limited to the first 20 registrants.

Nebraska Trucking Association Fall Educational Series

OCTOBER/NOVEMBER

Oct. 14th - DOT Compliance & Safety (1 day)

This seminar focuses on driver qualifications, safety fitness and safety ratings, roadside inspections, CDL requirements, and driver physicals. Master the safety compliance skills necessary to survive a DOT safety audit.

Fees: \$180 member/\$200 non-member

Registration Deadline: Oct. 1

Class size is limited to the first 20 registrants.

Oct. 15th - Controlled Substances & Alcohol Mandatory Training (half day)

This seminar completes the DOT's mandatory supervisor training requirements for alcohol and controlled substances. Plus, you'll review the critical parts of the DOT regulations on alcohol and drug testing (Part 382 and Part 40).

Fees: \$90 member/\$110 non-member

Registration Deadline: Oct. 1

Class size is limited to the first 20 registrants.

Oct. 15th - Hours of Service & Driver Logs (half day)

This hands-on interactive seminar provides training on the federal hours of service regulations and the proper use of driver logs. You'll participate in a driver log review and learn to identify inaccurate entries.

Fees: \$90 member/\$110 non-member

Registration Deadline: Oct. 1

Class size is limited to the first 20 registrants.

Nov. 17th-18th - Hazardous Materials Training (2 days)

These two days center on regulatory training. You'll gain a general understanding of how to use the hazardous materials table, hazardous materials classes, marking bulk and non-bulk packaging, labeling, preparing shipping papers, placarding, and loading and unloading of vehicles. The seminar also helps fulfill the 49 CFR Part 172 Subpart H recurrent training requirements.

Fees: \$340 member/\$400 non-member

Registration Deadline: Nov. 1

Class size is limited to the first 20 registrants.

Nebraska Trucking Association Winter Educational Series

JANUARY

Certified Safety Supervisor/Certified Director of Safety

How to Become Certified

Certified Director of Safety (CDS)

Job experience required:

- ❖ Five years experience in the fleet safety field
- ❖ Four years experience in the fleet safety field (with a 4 yr. degree)

Course requirements:

- ❖ Motor Fleet Safety Basics*
- ❖ Managing Motor Fleet Safety Programs

Exam: CDS exam will be given following the "Managing Motor Fleet" course

On your own following completion of the courses:

- ❖ Submit certification application and exhibit binder within 60 days

Certified Safety Supervisor (CSS)

Job experience required:

- ❖ Two years experience in the fleet safety field

Course requirements:

- ❖ Motor Fleet Safety Basics*

Exam: CSM/E exam will be given following the "Motor Fleet Safety Basics" course

On your own following completion of the courses:

- ❖ Submit certification application and exhibit binder within 60 days

Fees

Inclusive tuition for Certification includes:

- ❖ Course fees
- ❖ NATMI membership fee
- ❖ Certification kit
- ❖ Certification application fee

CSS/CDS Test Out Option: \$1,195 (includes test out and certification exam)

CSS/CDS Full Program: \$1,295 (includes both courses and certification exam)

Jan. 18th-19th - Motor Fleet Safety Basics (2 days)

This "fleet safety 101" program is designed to provide training on the nuts and bolts of safety-related policies and procedures. The course is designed for relatively new safety supervisors. *Certification applicants who feel they have mastered the technical content of this course have the option to test out of it. Register for the Safety Basics Testing Option the same way you would register for the classroom training.

Jan. 20th-21st - Managing Motor Fleet Safety Programs (2 days)

Transportation safety directors and prospective safety directors will gain the vision and skills necessary to manage an effective safety program and consistently improve the safety of company operations using quality management approaches.

Jan. 22nd - CSS/CDS Exam

Registration Deadline: Jan. 1

Class size is limited to the first 20 registrants.

Nebraska Trucking Association Winter Educational Series

FEBRUARY

Certified Supervisor of Maintenance/Equipment and Certified Director of Maintenance/Equipment

How to Become Certified

Certified Director of Maintenance/Equipment (CDM/E)

Job experience required:

- ❖ Five years experience in fleet maintenance management
- ❖ Four years experience in fleet maintenance management (with a 4 yr. degree)

Course requirements:

- ❖ Essentials of Fleet Maintenance Management
- ❖ Cost Containment for Fleet Maintenance Management

Exam: CDM/E exam will be given following the "Cost Containment" course

On your own following completion of the courses:

- ❖ Submit certification application and exhibit binder within 60 days

Certified Supervisor of Maintenance/Equipment (CSM/E)

Job experience required:

- ❖ Two years experience in the fleet maintenance profession

Course requirements:

- ❖ Essentials of Fleet Maintenance Management

Exam: CSM/E exam will be given following the "Essentials" course

On your own following completion of the courses:

- ❖ Submit certification application and exhibit binder within 60 days

Fees

Inclusive tuition for Certification includes:

- ❖ Course fees
- ❖ NATMI membership fee
- ❖ Certification kit
- ❖ Certification application fee

CDM/E: \$1,295 (includes courses + certification exam)

CSM/E: \$900 (includes course + certification exam)

Feb. 15th-16th - Essentials of Fleet Maintenance Management (2 days), with CSM/E exam on Feb 16

Keep current with rapidly changing issues such as federal regulations and computer technology. Learn management principles; training techniques; and development, implementation, and monitoring of a preventive maintenance program.

Feb. 17th-18th - Cost Containment Strategies for Fleet Maintenance Managers (2 days)

Learn to manage the vehicle specifications process; evaluate today's computerized management systems; analyze shop operations and shop design; apply advanced financial management techniques; and control costs.

Feb. 19th - CDM/E Exam

Registration Deadline: Feb. 1

Class size is limited to the first 20 registrants.

Nebraska Trucking Association Spring Educational Series

MARCH

Mar. 23rd - DOT Compliance & Safety (1 day)

This seminar focuses on driver qualifications, safety fitness and safety ratings, roadside inspections, CDL requirements, and driver physicals. Master the safety compliance skills necessary to survive a DOT safety audit.

Fees: \$180 member/\$200 non-member
Registration Deadline: March 1
Class size is limited to the first 20 registrants.

Mar. 24th - Controlled Substances & Alcohol Mandatory Training (half day)

This seminar completes the DOT's mandatory supervisor training requirements for Alcohol and controlled substances. Plus, you'll review the critical parts of the DOT regulations on alcohol and drug testing (Part 382 and Part 40).

Fees: \$90 member/\$110 non-member
Registration Deadline: March 1
Class size is limited to the first 20 registrants.

Mar. 24th - Hours of Service & Driver Logs (half day)

This hands-on interactive seminar provides training on the federal hours of service regulations and the proper use of driver logs. You'll participate in a driver log review and learn to identify inaccurate entries.

Fees: \$90 member/\$110 non-member
Registration Deadline: March 1
Class size is limited to the first 20 registrants.

Nebraska Trucking Association Spring Educational Series

APRIL/MAY

April 19th - 20th - Accident Investigation (2 days)

Develop investigative skills and control costs through a thorough investigation. Participate in a field exercise to apply the knowledge and skills acquired during the course.

Fees: \$495 member/\$595 non-member
Registration Deadline: April 1
Class size is limited to the first 20 registrants.

April 21st - 22nd - Advanced Accident Investigation (2 days)

Solve case studies and receive instruction in analyzing evidence. Using skills and knowledge from this and the basic course, students will learn to reconstruct an accident scene and develop knowledge of the litigation process

Fees: \$480 member/\$580 non-member
Registration Deadline: April 1
Class size is limited to the first 20 registrants.

May 18th -Workers' Compensation, Injury Prevention & Cost Control (1 day)

This course is designed to help small and mid-size companies reduce their injury rate and workers' compensation costs; develop an injury prevention program, manage internal and external claims processing and stop fraud before it occurs.

Fees: \$240 member/\$300 non-member
Registration Deadline: May 1
Class size is limited to the first 20 registrants.

Nebraska Trucking Association Educational Series Registration Information

Online Registration is highly recommended due to course size limits (see course description)

To register for a course online, go to: www.natmi.org then click on "course registration" on the left side of the screen.

To register for a course offline: Complete the form on page 19 of this catalog and fax it to 402-476-8570. **Note: It may take up to two business days for registration to be completed, at which time the course size limit may be reached.**

Course Location and Directions

All courses will be held at the Nebraska Trucking Association office.

1701 K Street
Lincoln, Nebraska

Directions:

From Omaha: take I-80 West to exit 401 (9th Street Downtown) to I-180 South; take I-180S to K Street and turn Left on K Street; take K Street to 17th Street and continue through intersection. Nebraska Trucking Association is location on the southeast corner of 17th & K Streets.

From Grand Island: take I-80 East to exit 397 (Beatrice/Nebraska City) to Hwy 77S; take Hwy 77S to Rosa Parks Way and take left fork towards downtown; continue to K Street (Rosa Parks Way turns into K Street); take K street to 17th Street and continue through intersection. Nebraska Trucking Association is located on the southeast corner of 17th & K Streets.

Accommodations:

Please contact Suzanne Eggert, 402-476-8504 in Lincoln, seggert@nebtrucking.com, if you need hotel recommendations for your stay in Lincoln. Meals during the courses are "on your own."

Nebraska Trucking Association Educational Series Registration Form

Fax Completed Form to: 402-476-8570

Registrant Information

Name: _____

Company: _____

Address: _____

Phone: _____

Email: _____

Course Selection*

Fall Series

- DOT Compliance & Safety
- Controlled Substances & Alcohol Training
- Hours of Service & Driver Logs
- Hazardous Materials Training

Spring Series

- DOT Compliance & Safety
- Controlled Substances & Alcohol Training
- Hours of Service & Driver Logs
- Accident Investigation
- Advanced Accident Investigation
- Workers Comp, Injury Prev. & Cost Control

Summer & Winter "Certification" Series

- Summer Winter
- Certified Safety Supervisor (Test Out Option)
- Certified Safety Supervisor (Full Program)
- Certified Director of Safety (Test Out Option)
- Certified Director of Safety (Full Program)
- Certified Supervisor Maintenance/Equipment
- Certified Director Maintenance/Equipment

*** Refer to course descriptions for fees, registration deadlines, and class size.**

Payment Information

Pick One: Bill Me (NTA members only) Credit Card

Card #: _____

Exp: _____

Name: _____

Cancellation Policy: Cancellations occurring prior to the registration deadline will receive a full refund of any class fee, minus a \$10.00 office handling fee. Cancellations made after the registration deadline will not be refunded. Nebraska Trucking reserves the right to cancel courses. Course fees will be refunded if the course is cancelled by Nebraska Trucking.

